

To: All Toyota Dealer Principals, Service Managers, Parts Managers
Subject: Special Service Campaign (Non-Compliance Recall) 90J
Update to Vehicle Capacity Weight and Gross Vehicles Weight Rating

As communicated earlier this year, Toyota filed a Non-Compliance Information Report (NCIR) with the National Highway Traffic Safety Administration (NHTSA) regarding the Load Carrying Capacity Modification (Addendum) Labels in certain Toyota vehicles. The last phase of this program will now be launched.

Certain Toyota vehicles that were accessorized at vehicle processing centers operated by Toyota Motor Sales, U.S.A., Inc. (TMS) had accessories installed that caused the weight of the vehicle as accessorized plus the weight of possible passengers to exceed the stated Gross Vehicle Weight Rating (GVWR) value. Therefore, the stated GVWR is insufficient. This condition does not meet federal requirements.

For this campaign, dealers are requested to:

- Exchange the certification label, tire and loading information label, load carrying capacity modification (addendum) label (if necessary) and correct the owner's manual in approximately 2,100 Sienna vehicles ('04 – '09 model year).
- In addition, for approximately 200 specific Sienna vehicles, the original equipment 16 inch wheels and tires will be replaced with 17 inch wheels and tires to increase the Vehicle Carrying Capacity.

The following vital information is provided to inform you and your staff of the owner notification phase of the campaign and your degree of involvement.

1. Owner Notification Mailing Date

The owner notification will commence in mid-October, 2009, approximately one week after the dealer notification.

Please note that only owners of the affected vehicles will be notified. If a dealer is contacted by an owner, who has not yet received a notification, please instruct them to **verify eligibility by confirming through Dealer Daily/TIS prior to performing repairs**. Dealers should perform the repair as outlined in the attached Technical Instructions.

2. Number of Vehicles Involved

There are approximately 2,100 vehicles involved. Of those vehicles involved, approximately 200 will **also** require replacement of tires and wheels.

Model Year	Affected Vehicles	Approx UIO
2004	Sienna	778
2005		122
2006		153
2007		212
2008		583
2009		273

3. Dealer/Owner Lists

Affected vehicle VIN lists (VIN only due to Privacy Laws) for SSC 90J have been distributed to each dealership's Service and Parts Managers. These lists are based upon the dealership's Primary Marketing Area (PMA) or selling dealership where applicable. Based upon our records, a dealership which does not have an affected vehicle in their PMA will receive a report indicating so.

4. Parts Ordering

As the various labels are VIN specific, dealers are requested to schedule an appointment with the customer before ordering the materials. We have advised owners in the Owner Letter to allow approximately 5 to 10 working days for you to receive the vehicle specific package.

Vehicle specific labels and owner manual updates can be ordered through the following website: <http://toyotaNCR2.imagespm.info/>. Log-on with your dealer code and existing password. If you do not have an existing password, please use "xxxxx". Dealers may research their order by calling 310-468-5516.

In addition to updating the vehicle specific materials, 152 specific vehicles will also require that all 4 wheels and tires (excluding the spare tire) be replaced (**see VIN list attached to this letter**). To order the wheel and tire assemblies:

- Please verify the full 17-digit VIN against the attached VIN list. Only 152 specific vehicles will require these wheels and tire assemblies.
- Contact Dealer Tire at (866) 460-8262 **only after** a customer whose vehicle is on the attached VIN list has made an appointment. You will need to provide the 17-digit VIN.
- The wheels and tires will be delivered free-of-charge, but if we do not receive a campaign completion claim within 60 days, your dealer account will be debited the full amount (\$547.20) of the wheel and tire assembly.
- The wheels and tires will be fully assembled, mounted, balanced and palletized.

Please note vehicle specific materials are non returnable. If a dealer orders unneeded materials, it will be their responsibility to ship the materials to the appropriate dealership.

5. Repair Procedures

Refer to TIS for Technical Instructions on how to perform this procedure.

6. Warranty Processor Instructions

The operation codes to be used for this campaign are:

SSC #	Op. Code	Description	Flat Rate Hour
90J	9514K1	Attach Labels to Vehicle and Update Owner's Manual	0.3 hr/vehicle
	9514K2*	Attach Labels to Vehicle, Update Owner's Manual, and Install all 4 Tires with Four Wheel Alignment Note: Before using this Op Code ensure the vehicles VIN is listed on the table attached to the end of this letter. Claims filed for VINs not on this list will be debited.	2.9 hr/vehicle

Submit Special Service Campaign claims following the procedures described in the Toyota Warranty Policy and Procedures Manual.

NOTE: The above flat rate time includes 0.1 hour for administrative cost per unit for the dealership.

***Dealers will be reimbursed for the cost of tire disposal at \$12.00 per vehicle. These costs are to be claimed as sublet type 'TY' on the warranty claim.**

Please review this entire Special Service Campaign package with the appropriate associates so that they may provide the necessary support to your dealers and maximize our combined customer satisfaction efforts.

Thank you for your cooperation.
TOYOTA MOTOR SALES, U.S.A., INC.

Tire Replacement VIN List



**Do not replace the tires under this campaign unless the VIN is listed below.
Tire replacement for VINs not shown on the list below will be debited.**

VIN
5TDZA23C04S000962
5TDZA23C04S015896
5TDZA23C04S026784
5TDZA23C04S037865
5TDZA23C04S056691
5TDZA23C04S073006
5TDZA23C04S074625
5TDZA23C06S417310
5TDZA23C06S558037
5TDZA23C14S009251
5TDZA23C14S017527
5TDZA23C14S022159
5TDZA23C14S053699
5TDZA23C14S068204
5TDZA23C14S098657
5TDZA23C14S099551
5TDZA23C16S387850
5TDZA23C16S398329
5TDZA23C16S431734
5TDZA23C16S524303
5TDZA23C24S005659
5TDZA23C24S015026
5TDZA23C24S024504
5TDZA23C24S037978
5TDZA23C24S106569
5TDZA23C24S149342
5TDZA23C24S209040
5TDZA23C25S360770
5TDZA23C34S009574
5TDZA23C34S029744
5TDZA23C34S057317
5TDZA23C34S087420
5TDZA23C34S106354
5TDZA23C36S423683
5TDZA23C44S001306
5TDZA23C44S002651
5TDZA23C44S016470
5TDZA23C44S017568

VIN
5TDZA23C44S079424
5TDZA23C44S091119
5TDZA23C44S100496
5TDZA23C44S114818
5TDZA23C44S147012
5TDZA23C44S166661
5TDZA23C44S200176
5TDZA23C45S236998
5TDZA23C45S261917
5TDZA23C45S282170
5TDZA23C45S291807
5TDZA23C46S387535
5TDZA23C54S004621
5TDZA23C54S007986
5TDZA23C54S010046
5TDZA23C54S027266
5TDZA23C54S036422
5TDZA23C54S094448
5TDZA23C54S095051
5TDZA23C54S117226
5TDZA23C54S120708
5TDZA23C54S123740
5TDZA23C54S134401
5TDZA23C54S141218
5TDZA23C54S159623
5TDZA23C55S268682
5TDZA23C64S015448
5TDZA23C64S025025
5TDZA23C64S041676
5TDZA23C64S046618
5TDZA23C64S071373
5TDZA23C64S104257
5TDZA23C64S167469
5TDZA23C64S217447
5TDZA23C66S500708
5TDZA23C74S004443
5TDZA23C74S013904
5TDZA23C74S052685

VIN
5TDZA23C74S068076
5TDZA23C74S083466
5TDZA23C74S144895
5TDZA23C74S186077
5TDZA23C75S320765
5TDZA23C76S408815
5TDZA23C76S496555
5TDZA23C76S576440
5TDZA23C84S019260
5TDZA23C84S042456
5TDZA23C84S048550
5TDZA23C84S090667
5TDZA23C84S113087
5TDZA23C84S129497
5TDZA23C84S200486
5TDZA23C85S253979
5TDZA23C86S410556
5TDZA23C86S535704
5TDZA23C94S043034
5TDZA23C94S045740
5TDZA23C94S066474
5TDZA23C94S074963
5TDZA23C94S078219
5TDZA23C94S101109
5TDZA23C94S105676
5TDZA23C94S126446
5TDZA23C95S290930
5TDZA23C96S469504
5TDZA23C96S535985
5TDZA23CX4S005005
5TDZA23CX4S007045
5TDZA23CX4S010513
5TDZA23CX4S021043
5TDZA23CX4S039364
5TDZA23CX4S058397
5TDZA23CX4S078567
5TDZA23CX4S097796
5TDZA23CX4S100079

VIN
5TDZA23CX5S369734
5TDZA23CX6S382744
5TDZA23CX6S402488
5TDZA23CX6S453862
5TDZA23CX6S460102
5TDZK23C07S011655
5TDZK23C07S086906
5TDZK23C08S111935
5TDZK23C08S114818
5TDZK23C09S275316
5TDZK23C17S029050
5TDZK23C17S046916
5TDZK23C17S056068
5TDZK23C18S112625
5TDZK23C19S231308
5TDZK23C19S263420
5TDZK23C27S084526
5TDZK23C27S099253
5TDZK23C28S103559
5TDZK23C37S043838
5TDZK23C39S243475
5TDZK23C49S285086
5TDZK23C57S000375
5TDZK23C57S005561
5TDZK23C58S111946
5TDZK23C59S252713
5TDZK23C67S028699
5TDZK23C77S066975
5TDZK23C77S088894
5TDZK23C77S088961
5TDZK23C78S175809
5TDZK23C79S272834
5TDZK23C87S030910
5TDZK23C89S235520
5TDZK23C97S084166
5TDZK23C98S112453
5TDZK23CX7S003434
5TDZK23CX8S135210

Special Service Campaign 90J

Non-Compliance Recall – Update to Vehicle Capacity Weight and Gross Vehicles Weight Rating

VIN: <Add VIN> – <Model Year> Model Year <Make> <Model>

Dear Toyota Owner:

This notice is being sent to you in accordance with the requirements of the National Traffic and Motor Vehicle Safety Act. Toyota has decided that your vehicle (VIN listed above) fails to conform to a provision of Federal Motor Vehicle Safety Standards (FMVSS) No. 110, "Tire selection and Rims," and 49 CFR Part 567. The value of the Vehicle Capacity Weight (VCW) on the tire and loading information label and the Gross Vehicle Weight Rating (GVWR) stated on the certification label was insufficient for certain vehicles.

What is the condition?

Certain Toyota vehicles that were accessorized at vehicle processing centers operated by Toyota Motor Sales, U.S.A., Inc. (TMS) had accessories installed that caused the weight of the vehicle plus the weight of possible passengers to exceed the stated GVWR value. Therefore, the stated GVWR is insufficient. This condition does not meet federal requirements.

What will Toyota do?

Toyota has carefully evaluated the GVWR value originally assigned to the subject vehicles, and has concluded that there is sufficient reserve in the stated GVWR to permit an upward adjustment of the GVWR assigned to these specific vehicles.

Any Toyota dealer will replace the certification label, the tire and loading information label, and the load carrying capacity modification (addendum) label (if necessary) at **NO CHARGE**. The dealer will also correct the owner's manual at **NO CHARGE**.

What should you do?

Please contact your authorized Toyota dealer so it can order the **vehicle specific** materials for this important campaign. Your dealer will contact you when the materials have arrived. It will take approximately 5 to 10 working days for the materials to arrive at your dealership.

Please ensure your owner's manual is in the vehicle at the time of the campaign repair.

The campaign repair will take approximately one hour. However, depending upon the dealer's work schedule, it may be necessary to make your vehicle available for a longer period of time.

We request that you present this notice to the dealer at the time of your service appointment.

If you would like to update your vehicle ownership or contact information, please go to www.toyota.com/ownersupdate. You will need your full 17-digit Vehicle Identification Number (VIN) to input the new information.

What if you have other questions?

Your local Toyota dealer will be more than happy to answer any of your questions. If you require further assistance, you may contact the Toyota Customer Experience Center at 1-888-270-9371 Monday through Friday, 5:00 am to 6:00 pm, or Saturday 7:00 am to 4:00 pm Pacific Standard Time.

If you believe that the dealer or Toyota has failed, or is unable to remedy the defect within a reasonable time, you may submit a complaint to the Administrator, National Highway Traffic Safety Administration, 1200 New Jersey Avenue S.E., Washington, DC 20590 or call the toll free Vehicle Safety Hot Line at 1-888-327-4236 (TTY: 1-800-424-9153), or go to <http://www.safercar.gov>.

We have sent this notice in the interest of your continued satisfaction with our products, and we sincerely regret any inconvenience this condition may have caused you.

Thank you for driving a Toyota.

Sincerely,

TOYOTA MOTOR SALES, U.S.A., INC.

Special Service Campaign 90J

Non-Compliance Recall – Update to Vehicle Capacity Weight and Gross Vehicles Weight Rating

VIN: <Add VIN> – <Model Year> Model Year <Make> <Model>

Dear Toyota Owner:

This notice is being sent to you in accordance with the requirements of the National Traffic and Motor Vehicle Safety Act. Toyota has decided that your vehicle (VIN listed above) fails to conform to a provision of Federal Motor Vehicle Safety Standards (FMVSS) No. 110, "Tire selection and Rims," and 49 CFR Part 567. The value of the Vehicle Capacity Weight (VCW) on the tire and loading information label and the Gross Vehicle Weight Rating (GVWR) stated on the certification label was insufficient for certain vehicles.

What is the condition?

Certain Toyota vehicles that were accessorized at vehicle processing centers operated by Toyota Motor Sales, U.S.A., Inc. (TMS) had accessories installed that caused the weight of the vehicle plus the weight of possible passengers to exceed the stated GVWR value. Therefore, the stated GVWR is insufficient. This condition does not meet federal requirements.

What will Toyota do?

Toyota has carefully evaluated the GVWR value originally assigned to the subject vehicles, and has concluded that there is sufficient reserve in the stated GVWR to permit an upward adjustment of the GVWR assigned to these specific vehicles.

Any Toyota dealer will replace the certification label, the tire and loading information label, and the load carrying capacity modification (addendum) label (if necessary) at **NO CHARGE**. The dealer will also correct the owner's manual at **NO CHARGE**.

In addition, the dealer will replace original equipment 16 inch wheels and tires with 17 inch wheels and tires to increase the vehicle's load carrying capacity. This will also be done at **NO CHARGE**.

What should you do?

Please contact your authorized Toyota dealer so it can order the **vehicle specific** materials for this important campaign. Your dealer will contact you when the materials have arrived. It will take approximately 5 to 10 working days for the materials to arrive at your dealership.

Please ensure your owner's manual is in the vehicle at the time of the campaign repair.

The campaign repair will take approximately one hour. However, depending upon the dealer's work schedule, it may be necessary to make your vehicle available for a longer period of time.

We request that you present this notice to the dealer at the time of your service appointment.

If you would like to update your vehicle ownership or contact information, please go to www.toyota.com/ownersupdate. You will need your full 17-digit Vehicle Identification Number (VIN) to input the new information.

What if you have other questions?

Your local Toyota dealer will be more than happy to answer any of your questions. If you require further assistance, you may contact the Toyota Customer Experience Center at 1-888-270-9371 Monday through Friday, 5:00 am to 6:00 pm, or Saturday 7:00 am to 4:00 pm Pacific Standard Time.

If you believe that the dealer or Toyota has failed, or is unable to remedy the defect within a reasonable time, you may submit a complaint to the Administrator, National Highway Traffic Safety Administration, 1200 New Jersey Avenue S.E., Washington, DC 20590 or call the toll free Vehicle Safety Hot Line at 1-888-327-4236 (TTY: 1-800-424-9153), or go to <http://www.safercar.gov>.

We have sent this notice in the interest of your continued satisfaction with our products, and we sincerely regret any inconvenience this condition may have caused you.

Thank you for driving a Toyota.

Sincerely,

TOYOTA MOTOR SALES, U.S.A., INC.



**Certain 2004 – 2009 Sienna
Update to Vehicle Capacity Weight and Gross Vehicle Weight Rating
Non-Compliance Recall**

Q1: What is the condition?

A1: Certain Toyota vehicles that were accessorized at vehicle processing centers operated by Toyota Motor Sales, U.S.A., Inc. (TMS) had accessories installed that caused the weight of the vehicle plus the weight of possible passengers to exceed the stated Gross Vehicle Weight Rating (GVWR) value. Therefore, the stated GVWR is insufficient. This condition does not meet federal requirements.

Q2: What is Toyota going to do?

A2: Toyota has carefully evaluated the GVWR value originally assigned to the subject vehicles, and has concluded that there is sufficient reserve in the stated GVWR to permit an upward adjustment of the GVWR assigned to these specific vehicles.

Any Toyota dealer will replace the certification label, the tire and loading information label, and the load carrying capacity modification (addendum) label (if necessary) at **NO CHARGE**. The dealer will also correct the owner's manual at **NO CHARGE**.

In addition, for specific Sienna vehicles, the dealer will replace original equipment 16 inch wheels and tires with 17 inch wheels and tires to increase the vehicle's load carrying capacity. This will also be done at **NO CHARGE**.

Q3: Which and how many vehicles are involved?

A3: There are approximately 2,100 vehicles involved. Of those vehicles involved, approximately 200 will require replacement tires and wheels.

Model Year	Affected Vehicles	Approx UIO
2004	Sienna	778
2005		122
2006		153
2007		212
2008		583
2009		273

Q4: Are there any other Toyota or Lexus vehicles involved?

A4: Yes, this specific condition also affects 83 Lexus GX 470 vehicles (2009 model year).

Q5: What is the production period of the affected vehicles?

A5: The affected vehicles were produced:

Model Year	Model	Production Range
2004 - 2009	Sienna	Early January 2003 – Early May 2009

Q6: What should an owner do if they have immediate concerns about their vehicle?

A6: If a customer has immediate concerns they are requested to contact their local Toyota Dealer. If additional assistance is required they may contact the Toyota Customer Experience Center at 1-888-270-9371 Monday through Friday, 5:00 am to 6:00 pm, Saturday 7:00 am through 4:00 pm Pacific Standard Time.

Q7: What is a Certification Label?

A7: The Certification Label is a vehicle specific label posted on the driver's door post of each vehicle. It provides information such as the VIN, VIN Barcode, Gross Vehicle Weight Rating, U.S. vehicle certification statement as well as other information.

Q8: What is a Tire and Loading Information Label?

A8: The Tire and Loading Information Label provides vehicle information regarding the original equipment tire size, tire inflation pressure, occupant seating capacity and load carrying capacity.

Q9: What is a Load Carrying Capacity Modification Label?

A9: The Load Carrying Capacity Modification Label is a yellow label located on the driver's side center pillar. The label will contain the wording, "CAUTION – LOAD CARRYING CAPACITY REDUCED" in block letters and "Modifications to this vehicle have reduced the original load carry capacity by ___kg or ___lbs". This figure reflects the weight of additional accessories which were not taken into account in the vehicle occupant and cargo carrying capacity located on the Tire and Loading Information Label.

Q10: Why do the tires and wheels need to be replaced?

A10: The tires and wheels will be replaced to increase the Vehicle Carrying Capacity.

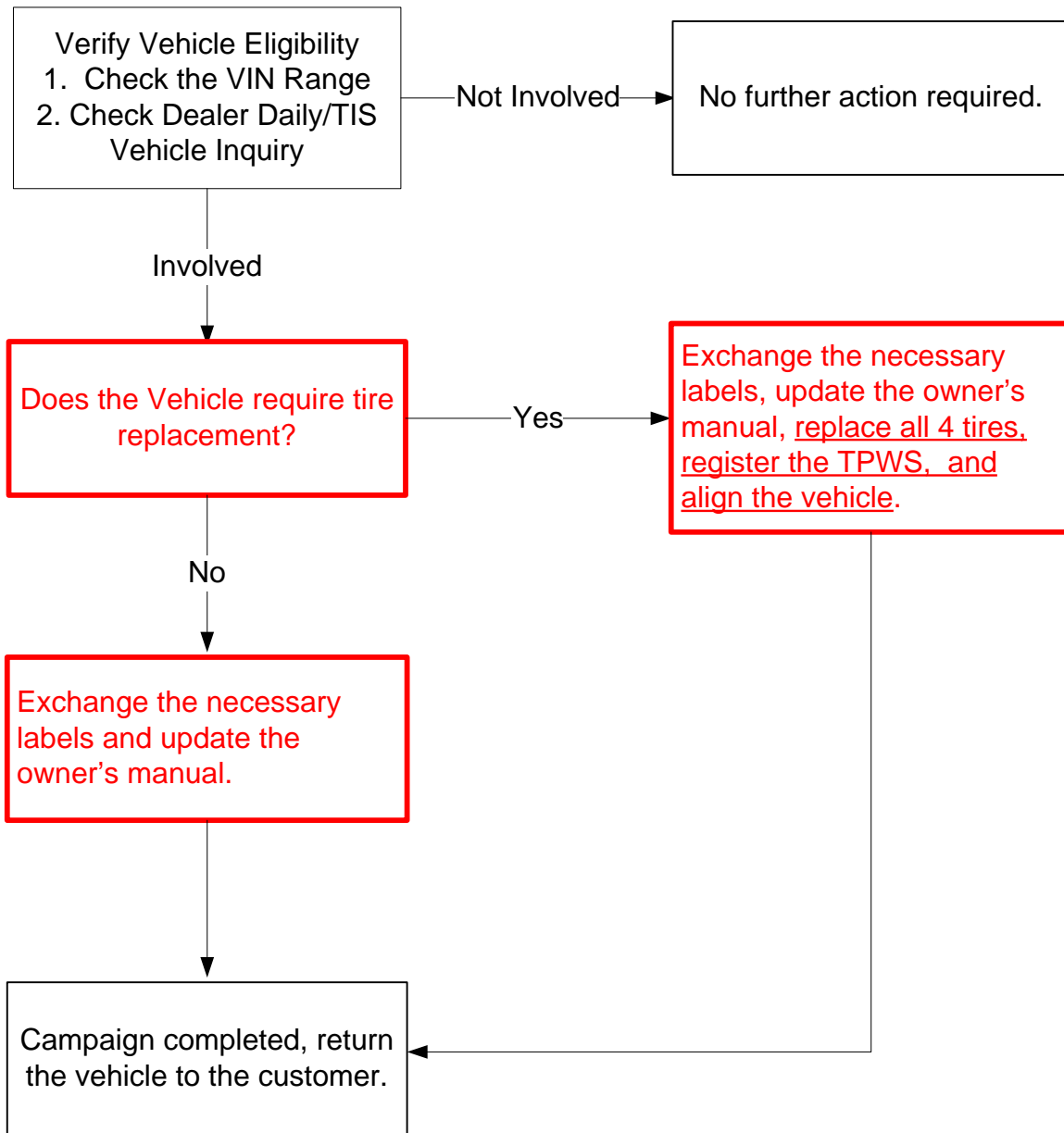
TECHNICAL INSTRUCTIONS

FOR

SPECIAL SERVICE CAMPAIGN 90J

**2004 THROUGH 2009 MODEL YEAR SIENNA
90J FMVSS 110 Labels NCIR II**

I. OPERATION FLOW CHART



II. IDENTIFICATION OF AFFECTED VEHICLES

A. AFFECTED VIN RANGE

MODEL	WMI	MY	VDS	START	FINISH
SIENNA	5TD	2004	BA22C	S000062	S028565
			BA23C	S000092	S028189
			ZA23C	S000962	S217447
		2005	BA22C	S028703	S053593
			BA23C	S031722	S050489
			ZA23C	S236998	S369734
		2006	BA22C	S054120	S076937
			BA23C	S058589	S074905
			ZA23C	S382744	S576440
		2007	BK22C	S000042	S008701
			ZK23C	S000375	S099253
		2008	BK22C	S008860	S022291
			BK23C	S018671	S020747
			ZK22C	S172533	S172533
			ZK23C	S103559	S184196
		2009	BK22C	S022105	S028169
			BK23C	S026009	S027959
			ZK22C	S243749	S278529
ZK23C	S227186		S285086		

NOTE: Not all vehicles in VIN range are affected

- Tire Replacement VIN List (**See Appendix A**)

NOTE:

- Check Dealer Daily/TIS Vehicle Inquiry to confirm the VIN is involved in this SSC. This will verify the vehicle is affected and has not already been completed prior to dealer shipment or by another dealer.
- TMS warranty will not reimburse dealers for repairs conducted on vehicles that are not affected or were completed by another dealer.

III. PREPARATION

A. Secure an Appointment with the Customer.

- a. Contact the customer to set up a confirmed appointment.

NOTE: Do not order replacement tires and labels until an appointment is confirmed with the customer

IMPORTANT:

In the event that you order a campaign package and the customer goes elsewhere for service, it is your dealership's responsibility to ship the campaign package to the servicing dealer.

B. Parts

- **Order the Replacement Labels and Owners Manual Page(s)**

- a. Open up a web browser (Internet Explorer, Firefox, etc) and log into the SSC website at <http://toyotaNCR2.imagespm.info/>.

NOTE: When logging in for the first time, your password is set to default as xxxxx(all lowercase).

- b. Input the appropriate information.

NOTE: You may also research your order by calling the Quality Compliance Hotline at 310-468-5516.

- **Order the Tires/Wheels/Lugs/Caps (if applicable)**

- a. Please verify the full 17-digit VIN against the attached VIN list. Only 200 specific vehicles will require these wheels and tire assemblies.

- b. Contact Dealer Tire at (866) 460-8262 **only after** a customer whose vehicle is on the attached VIN list has made an appointment. You will need to provide the 17-digit VIN.

- c. The wheels and tires will be fully assembled, mounted, balanced and palletized.

C. Label Verification

- Certification Label Verification
 - Verify that the 17 character VIN on the new Certification Label and old Certification Label match.
- Load Carrying Capacity Modification (Addendum) Label
 - Verify that the VIN on the Addendum Label matches the VIN on the vehicle.
- Tire and Loading Information Label
 - The Tire and Loading Information Label can not be identified by a VIN. If you are uncertain about whether you have the correct label, you can call the Quality Compliance Hotline at **310-468-5516**
- Owners Manual Content Replacement
 - Verify that the owners manual content you received is for the vehicle you are working on.

D. TOOLS

- Standard hand tools
- Torque Wrench suitable for wheel torque
- Lug nut socket
- Rubbing Alcohol to clean label surfaces

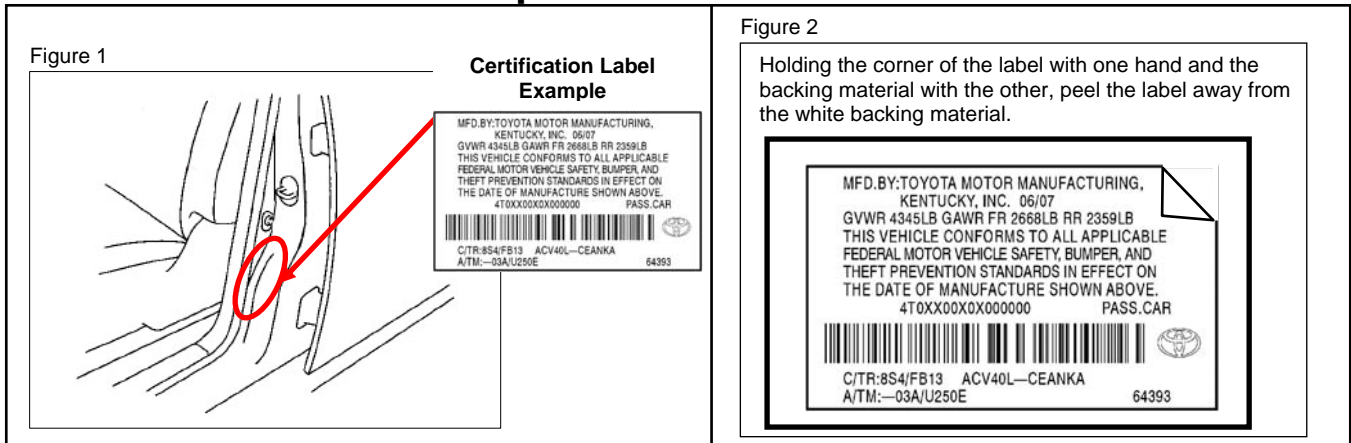
IV. BACKGROUND

Certain Toyota vehicles that were accessorized at vehicle processing centers operated by Toyota Motor Sales, U.S.A., Inc. (TMS) had accessories installed that caused the weight of the vehicle as accessorized plus the weight of possible passengers to exceed the stated Gross Vehicle Weight Rating (GVWR) value. Therefore, the stated GVWR is insufficient. This condition does not meet federal requirements.

There are approximately 2,100 Sienna vehicles (model year '04 – '09) involved in this SSC. Vehicles will require updates to various labels. In addition, approximately 200 Sienna vehicles will also require the replacement of the original equipment 16 inch wheels and tires with 17 inch tire/wheel assemblies.

V. WORK PROCEDURE

1. Certification Label Replacement



IMPORTANT: USE CARE WHEN REMOVING LABEL FROM BACKING MATERIAL TO AVOID DAMAGE.

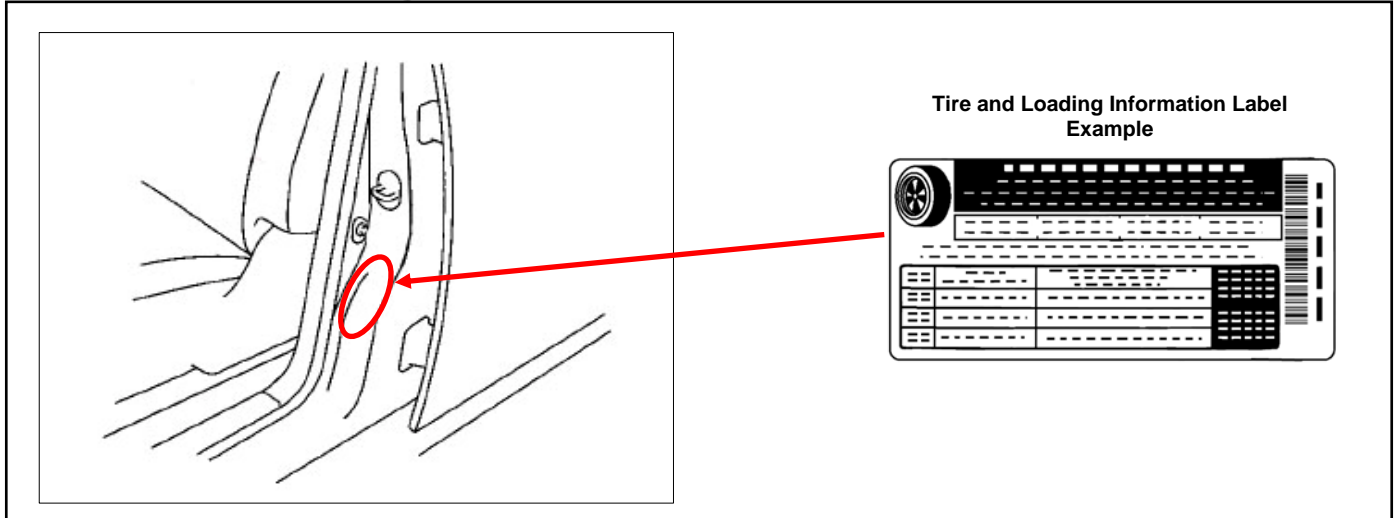
1. Certification Label Removal

- a) Locate the Certification Label on the vehicle (driver side B pillar). (Figure 1)
- b) Make sure the 17 character VIN on the new label and the 17 character VIN on the old label match.
- c) Carefully peel the old Certification Label from the vehicle
NOTE: Warming the label with a hair dryer may aid in removal of the old label.
- d) Affix the old label to the repair order.
- e) Clean any residual material left on the vehicle where the old label was located using alcohol.

2. Certification Label Installation

- a) Inspect the area where the new Certification Label will be installed.
NOTE: Clean the area with alcohol and let dry before installation.
- b) Carefully peel the new Certification Label off of the white backing paper. (Figure 2)
- c) Affix the new Certification Label in the same location as the old label.

2. Tire and Loading Information Label Replacement



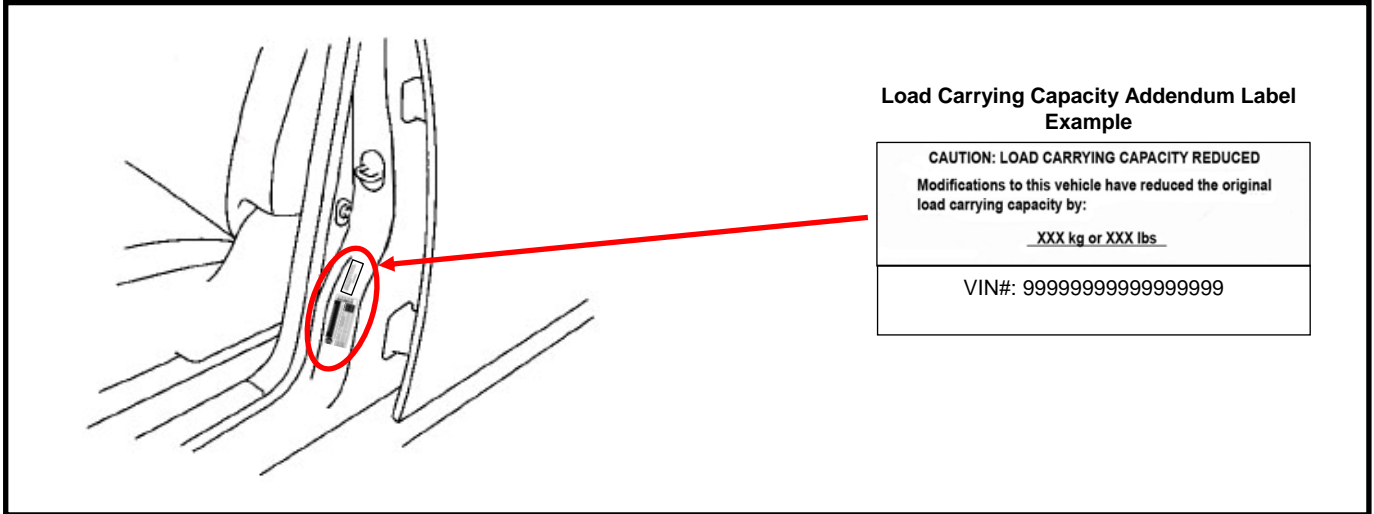
1. Tire and Loading Information Label Removal

- a) Locate the Tire and Loading Information Label on the vehicle (driver side B pillar).
- b) Carefully peel off the Tire and Loading Information label from the vehicle.
NOTE: Warming the label with a hair dryer may aid in removal of the old label.
- c) Affix the old label to the repair order.
- d) Clean any residual material left on the vehicle where the old label was located using alcohol.

2. Tire and Loading Information Label installation

- a) Inspect the area where the new Tire and Loading Information Label will be installed.
NOTE: Clean the area with alcohol and let dry before installation if dirty.
- b) Carefully peel the new Tire and Loading Information Label from the label backing material.
- c) Affix the new Tire and Loading Information Label in the same location as the old label.
IMPORTANT: Failure to properly separate the label from the backing material will cause the label to tear upon removal.

3. Load Carrying Capacity Addendum Label Replacement



1. Load Carrying Capacity Addendum Label Removal

- Locate the Load Carrying Capacity Addendum Label on the vehicle (driver side B pillar).
NOTE: Not all vehicles will have an old label.
- Carefully peel the old Load Carrying Capacity Addendum Label from the vehicle.
NOTE: Warming the label with a hair dryer may aid in removal of the old label.
- Affix the old label to the repair order.
- Clean any residual material left on the vehicle where the old label was located using alcohol.

2. Load Carrying Capacity Addendum Label Installation.

- Inspect the area where the new Load Carrying Capacity Addendum Label will be installed.
NOTE: Clean the area with alcohol and let dry before installation.
- Prior to installation, make sure that the VIN of the vehicle matches the VIN on the new label.
- Carefully peel the Load Carrying Capacity Addendum Label from the label backing material.
- Affix the new Load Carrying Capacity Addendum Label in the same location as the old label or as noted in the illustration above.
IMPORTANT: Failure to properly separate the label from the backing material will cause the label to tear upon removal.

4. Owners Manual Replacement Page Installation

Owners Manual Content Replacement Location

2004 – 2005 Sienna.....	Page 496
2006 Sienna.....	Page 497
2007 – 2008 Sienna.....	Page 513

Owners Manual Page Replacement location

2009 Sienna.....	Page 542
------------------	----------

1. Owners Manual Replacement Page Installation

- a) Open the owners manual to the page that needs to be replaced. (see the note below)

NOTE:

2004 – 2005 Sienna.....	Page 496
2006 Sienna.....	Page 497
2007 – 2008 Sienna.....	Page 513
2009 Sienna.....	Page 542

- b) Peel the replacement page from the adhesive backing.
- c) Carefully align the replacement page so that it is hovering exactly above the content to be replaced.
- NOTE:** Only the 2009 Sienna receives a complete replacement page. All other affected Sienna's receive an updated table(partial page).
- d) Slowly apply the replacement page starting from one side working your way to the other side.

IMPORTANT: Do not attempt to remove the page once it is applied. This will cause irreversible damage to the owners manual.

8. Wheel/Tire Replacement (Only on Applicable Vehicles)



For detailed vehicle disassembly and reassembly information, please reference TIS for the appropriate repair manual of the vehicle you are working on.

1. Tire and wheel removal

- a. Remove the wheels and tires from the vehicle.
- b. Drill several holes in the sidewall of each tire and rim.
- c. Recycle tires and scrap metals appropriately.

2. Tire and wheel installation

- a. Install the new tire and wheel assemblies using the new lug nuts supplied with the kit.
- b. Torque to the specification as stated in the appropriate repair manual on TIS
NOTE: The torque specification for all model years is **103 N-m (1,050 kgf-cm, 76ft-lbf)**

3. Re-initialization of the Tire Pressure Warning System (TPWS)

- a. Follow the steps in the repair manual to re-initialize the Tire Pressure Warning system.
- b. Log into TIS and perform a keyword search for **TIRE PRESSURE WARNING SYSTEM INITIALIZATION**
NOTE: There may be TPWS TSBs available for your model year.

4. Align the Vehicle

- a. Follow the steps in the repair manual to perform both a front wheel and rear wheel alignment.
- b. Log into TIS and perform a keyword search for **FRONT WHEEL ALIGNMENT** and **REAR WHEEL ALIGNMENT**.

Appendix A

Tire Replacement VIN List



**Do not replace the tires under this campaign unless the VIN is listed below.
Tire replacement for VINs not shown on the list below will be debited.**

VIN
5TDZA23C04S000962
5TDZA23C04S015896
5TDZA23C04S026784
5TDZA23C04S037865
5TDZA23C04S056691
5TDZA23C04S073006
5TDZA23C04S074625
5TDZA23C06S417310
5TDZA23C06S558037
5TDZA23C14S009251
5TDZA23C14S017527
5TDZA23C14S022159
5TDZA23C14S053699
5TDZA23C14S068204
5TDZA23C14S098657
5TDZA23C14S099551
5TDZA23C16S387850
5TDZA23C16S398329
5TDZA23C16S431734
5TDZA23C16S524303
5TDZA23C24S005659
5TDZA23C24S015026
5TDZA23C24S024504
5TDZA23C24S037978
5TDZA23C24S106569
5TDZA23C24S149342
5TDZA23C24S209040
5TDZA23C25S360770
5TDZA23C34S009574
5TDZA23C34S029744
5TDZA23C34S057317
5TDZA23C34S087420
5TDZA23C34S106354
5TDZA23C36S423683
5TDZA23C44S001306
5TDZA23C44S002651
5TDZA23C44S016470
5TDZA23C44S017568

VIN
5TDZA23C44S079424
5TDZA23C44S091119
5TDZA23C44S100496
5TDZA23C44S114818
5TDZA23C44S147012
5TDZA23C44S166661
5TDZA23C44S200176
5TDZA23C45S236998
5TDZA23C45S261917
5TDZA23C45S282170
5TDZA23C45S291807
5TDZA23C46S387535
5TDZA23C54S004621
5TDZA23C54S007986
5TDZA23C54S010046
5TDZA23C54S027266
5TDZA23C54S036422
5TDZA23C54S094448
5TDZA23C54S095051
5TDZA23C54S117226
5TDZA23C54S120708
5TDZA23C54S123740
5TDZA23C54S134401
5TDZA23C54S141218
5TDZA23C54S159623
5TDZA23C55S268682
5TDZA23C64S015448
5TDZA23C64S025025
5TDZA23C64S041676
5TDZA23C64S046618
5TDZA23C64S071373
5TDZA23C64S104257
5TDZA23C64S167469
5TDZA23C64S217447
5TDZA23C66S500708
5TDZA23C74S004443
5TDZA23C74S013904
5TDZA23C74S052685

VIN
5TDZA23C74S068076
5TDZA23C74S083466
5TDZA23C74S144895
5TDZA23C74S186077
5TDZA23C75S320765
5TDZA23C76S408815
5TDZA23C76S496555
5TDZA23C76S576440
5TDZA23C84S019260
5TDZA23C84S042456
5TDZA23C84S048550
5TDZA23C84S090667
5TDZA23C84S113087
5TDZA23C84S129497
5TDZA23C84S200486
5TDZA23C85S253979
5TDZA23C86S410556
5TDZA23C86S535704
5TDZA23C94S043034
5TDZA23C94S045740
5TDZA23C94S066474
5TDZA23C94S074963
5TDZA23C94S078219
5TDZA23C94S101109
5TDZA23C94S105676
5TDZA23C94S126446
5TDZA23C95S290930
5TDZA23C96S469504
5TDZA23C96S535985
5TDZA23CX4S005005
5TDZA23CX4S007045
5TDZA23CX4S010513
5TDZA23CX4S021043
5TDZA23CX4S039364
5TDZA23CX4S058397
5TDZA23CX4S078567
5TDZA23CX4S097796
5TDZA23CX4S100079

VIN
5TDZA23CX5S369734
5TDZA23CX6S382744
5TDZA23CX6S402488
5TDZA23CX6S453862
5TDZA23CX6S460102
5TDZK23C07S011655
5TDZK23C07S086906
5TDZK23C08S111935
5TDZK23C08S114818
5TDZK23C09S275316
5TDZK23C17S029050
5TDZK23C17S046916
5TDZK23C17S056068
5TDZK23C18S112625
5TDZK23C19S231308
5TDZK23C19S263420
5TDZK23C27S084526
5TDZK23C27S099253
5TDZK23C28S103559
5TDZK23C37S043838
5TDZK23C39S243475
5TDZK23C49S285086
5TDZK23C57S000375
5TDZK23C57S005561
5TDZK23C58S111946
5TDZK23C59S252713
5TDZK23C67S028699
5TDZK23C77S066975
5TDZK23C77S088894
5TDZK23C77S088961
5TDZK23C78S175809
5TDZK23C79S272834
5TDZK23C87S030910
5TDZK23C89S235520
5TDZK23C97S084166
5TDZK23C98S112453
5TDZK23CX7S003434
5TDZK23CX8S135210