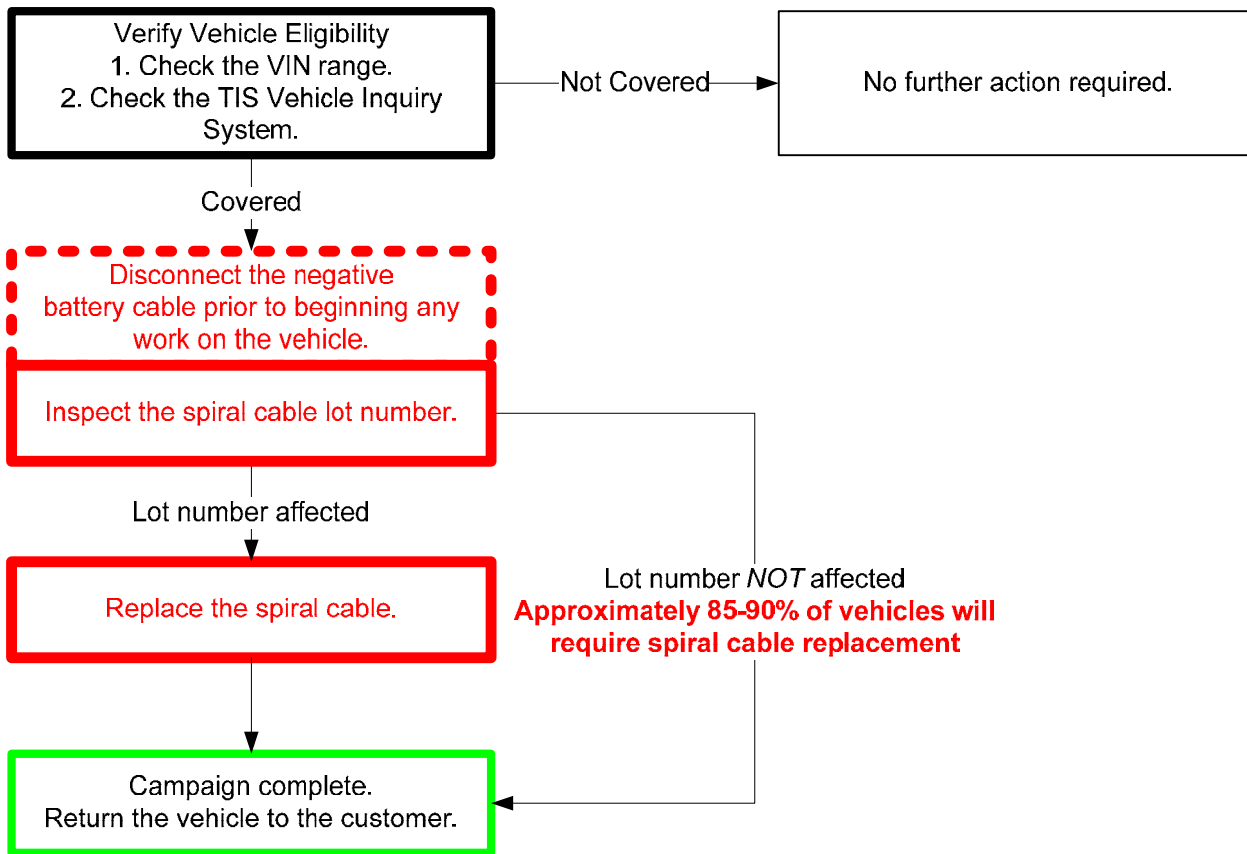


TECHNICAL INSTRUCTIONS
FOR
SAFETY RECALL C0B
SPIRAL CABLE REPLACEMENT
CERTAIN 2005 TO EARLY 2009 MODEL YEAR TACOMA

I. OPERATION FLOW CHART



II. PREPARATION

A. PARTS

Part Number	Part Description	Quantity
04002-04104	Spiral Cable Sub-Assy	1

B. TOOLS & EQUIPMENT

- Standard hand tools
- Techstream

SST – This is an essential special service tool that the dealership should have.

Tool Number	Tool Name
09950-50013	Universal Puller Set C

III. BACKGROUND

Due to the combination of the spiral cable design and characteristics unique to the chassis components of the Tacoma, steering wheel vibration (“flutter”) may cause friction between the Flexible Flat Cable (FFC) and the retainer in the spiral cable assembly in the steering wheel. In FFC’s with seven channel circuits, friction over time may result in damage to certain circuits on the flat cable that provide connectivity to the driver’s air bag module. If connectivity is lost, the air bag warning lamp will illuminate. In addition, the driver’s air bag may become deactivated, causing it to not deploy in the event of a crash. This could increase the risk of injury to the driver.

IV. IDENTIFICATION OF COVERED VEHICLES

A. COVERED VIN RANGE

WMI	MY	VIN Range	
		VDS	Range
3TM	2005	JU62N	M001037-M008091
		KU72N	M001031-M004841
		LU42N	M001024-M002890
		MU52N	M001026-M001900
	2006	JU62N	M007884-M028771
		KU72N	M004775-M010144
		LU42N	M002891-M008845
		MU52N	M001878-M003615
	2007	JU62N	M028772-M049700
		KU72N	M010029-M013697
		LU42N	M008667-M013600
		MU52N	M003620-M005092
	2008	JU62N	M049701-M070800
		KU72N	M013698-M017962
		LU42N	M013601-M020107
		MU52N	M005094-M007826
	2009	JU62N	M070812-M077844
		KU72N	M018029-M020081
		LU42N	M020119-M023253
		MU52N	M007895-M009590
5TE	2005	JU62N	Z001069-Z144893
		KU72N	Z001081-Z144836
		LU42N	Z001082-Z144890
		MU52N	Z001032-Z144879
		NX22N	Z001023-Z144884
		NX62N	Z001659-Z144755
		PX42N	Z001187-Z144724
		TU22N	Z001571-Z035879
		TU62N	Z001053-Z144895
		TX22N	Z001048-Z144900
		TX62N	Z001181-Z144873
		UU42N	Z001009-Z144899
		UX42N	Z001892-Z144707
		2006	JU62N
	KU72N		Z145137-Z320543
	LU42N		Z145036-Z320397
	MU52N		Z145156-Z320285
	NX22N		Z145177-Z320613
	NX62N		Z145547-Z320176
	PX42N		Z145459-Z320265
	TU62N		Z144902-Z320213
	TX22N		Z145349-Z320497
	TX62N		Z145234-Z320203
	UU42N		Z144920-Z320426
	UX42N		Z145491-Z320247

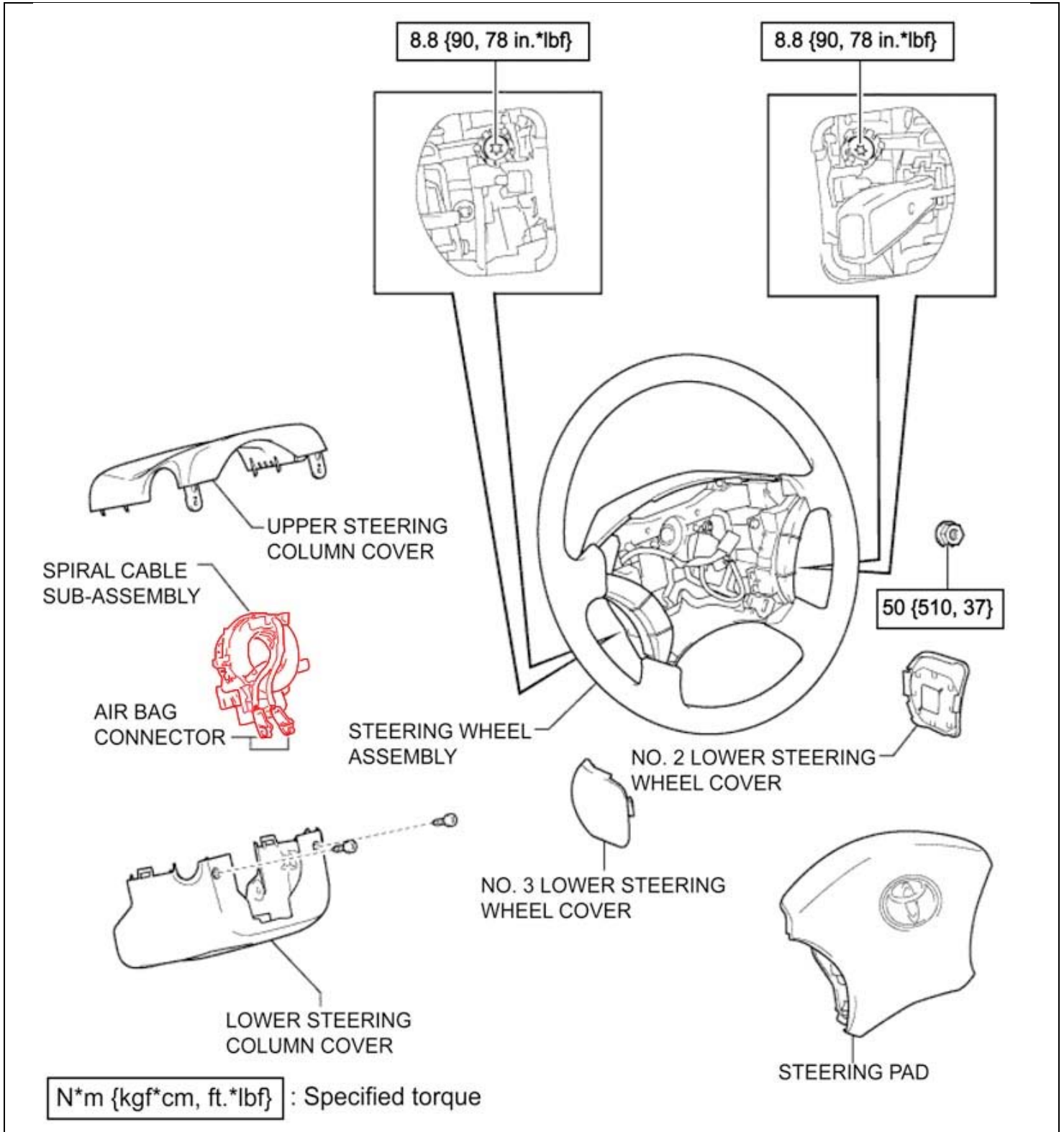
WMI	MY	VIN Range	
		VDS	Range
5TE	2007	JU62N	Z320673-Z469819
		KU72N	Z320671-Z469633
		LU42N	Z320918-Z469698
		MU52N	Z320870-Z469721
		NX22N	Z320620-Z469653
		NX62N	Z321207-Z469255
		PX42N	Z320860-Z469732
		TU62N	Z320771-Z469786
		TX22N	Z321110-Z469654
		TX62N	Z321199-Z469583
	2008	UU42N	Z320622-Z469869
		UX42N	Z320841-Z469743
		JU62N	Z470196-Z592508
		KU72N	Z470201-Z592453
		LU42N	Z469993-Z592675
		MU52N	Z470099-Z592630
		NX22N	Z469871-Z592426
		NX62N	Z469873-Z592203
		PX42N	Z470165-Z592599
		TU62N	Z470195-Z592581
2009	TX22N	Z469874-Z592319	
	TX62N	Z469875-Z592204	
	UU42N	Z469911-Z592689	
	UX42N	Z470171-Z592595	
	JU62N	Z592834-Z624570	
	KU72N	Z602439-Z602439	
	LU42N	Z595097-Z625485	
	MU52N	Z597877-Z625508	
	NX22N	Z592697-Z625702	
	NX62N	Z592974-Z611007	
2009	PX42N	Z592698-Z616079	
	TU62N	Z592876-Z625313	
	TX22N	Z593020-Z625828	
	TX62N	Z592973-Z610983	
	UU42N	Z592710-Z625899	
	UX42N	Z592997-Z616030	

NOTE:

- Check the TIS Vehicle Inquiry System to confirm the VIN is involved in this Safety Recall Campaign, and that the campaign has not already been completed prior to dealer shipment or by another dealer.
- TMS warranty will not reimburse dealers for repairs conducted on vehicles that are not covered or were completed by another dealer.

V. SPIRAL CABLE REPLACEMENT

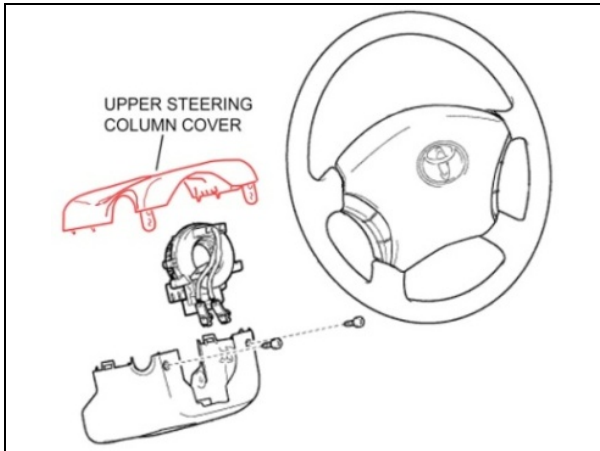
A. COMPONENTS





- Follow all precautions as outlined on TIS before servicing the SRS system.
- Approximately 85-90% of all vehicles will require spiral cable replacement. If initial inspection indicates that replacement is not necessary, reconfirm the inspection was performed correctly.

B. SPIRAL CABLE INSPECTION



1. DISCONNECT THE NEGATIVE BATTERY CABLE



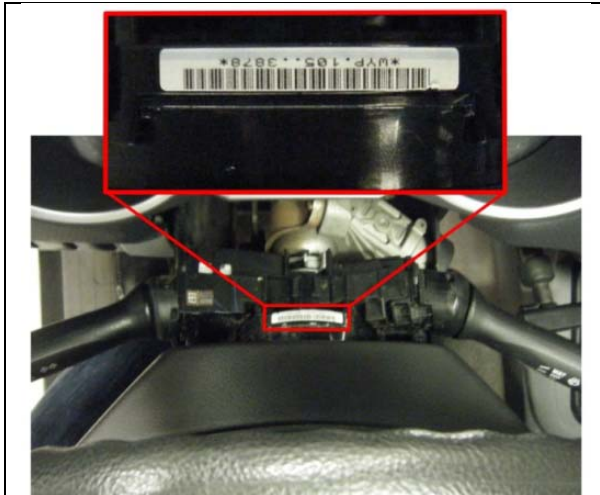
Wait at least 90 seconds after disconnecting the cable from the negative battery terminal to prevent airbag and seat belt pretensioner deployment.

2. REMOVE THE STEERING COLUMN UPPER COVER

- a) Turn the wheel to the right and left to expose and remove the steering column cover screws.
- b) Remove the upper cover.

3. INSPECT THE LOT NUMBER ON THE SPIRAL CABLE

NOTE: When viewing from the driver seat, the lot number will be upside down.



- a) Position yourself to view the lot number correctly.
- b) Record the 10 digit lot number on the repair order.

NOTE: If the lot number cannot be determined, the spiral cable should be replaced.



* XFT . **R84** .. 4643 *

1. [] [] [] [] . [**4**] [] [] [] [] [] [] []

2. [] [] [] [] . [**5**] [] [] [] [] [] [] []

3. [] [] [] [] . [**6**] [] [] [] [] [] [] []

4. [] [] [] [] . [**7**] [] [] [] [] [] [] []

5. [] [] [] [] . [**8**] [] [] [] [] [] [] []

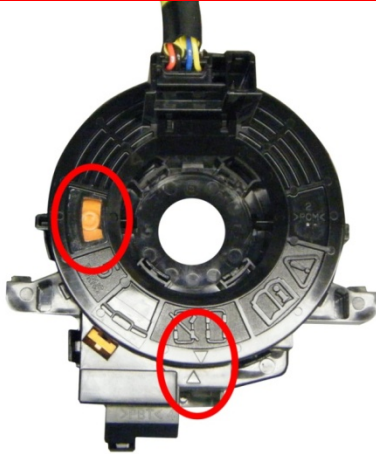
c) Compare the lot number on the spiral cable to the illustration. Does the spiral cable digit match any of the 5 patterns?

- YES** – Replace the spiral cable. Refer to TIS for instructions on [spiral cable replacement](#).
- NO** – The spiral cable is not affected. Campaign complete.

- The only digit relevant to this inspection is the one shown highlighted.
- Approximately 85-90% of all vehicles will require spiral cable replacement. If initial inspection indicates that replacement is not necessary, reconfirm the inspection was performed correctly.

NOTE: The repair manual link provided above is for 2009 model year, the replacement process is the same for all vehicles involved in this recall.

SPIRAL CABLE INSTALLATION NOTE



- **DO NOT** rotate the spiral cable prior to installing the steering wheel, the new spiral cable will be correctly centered.
- If the spiral cable has been rotated, you must recenter the spiral cable prior to installation.
 1. Turn the cable counterclockwise by hand until it becomes hard to turn.
 2. Turn the cable clockwise about 2.5 turns.
 3. Confirm the alignment marks align **AND** the orange roller is visible in the window.

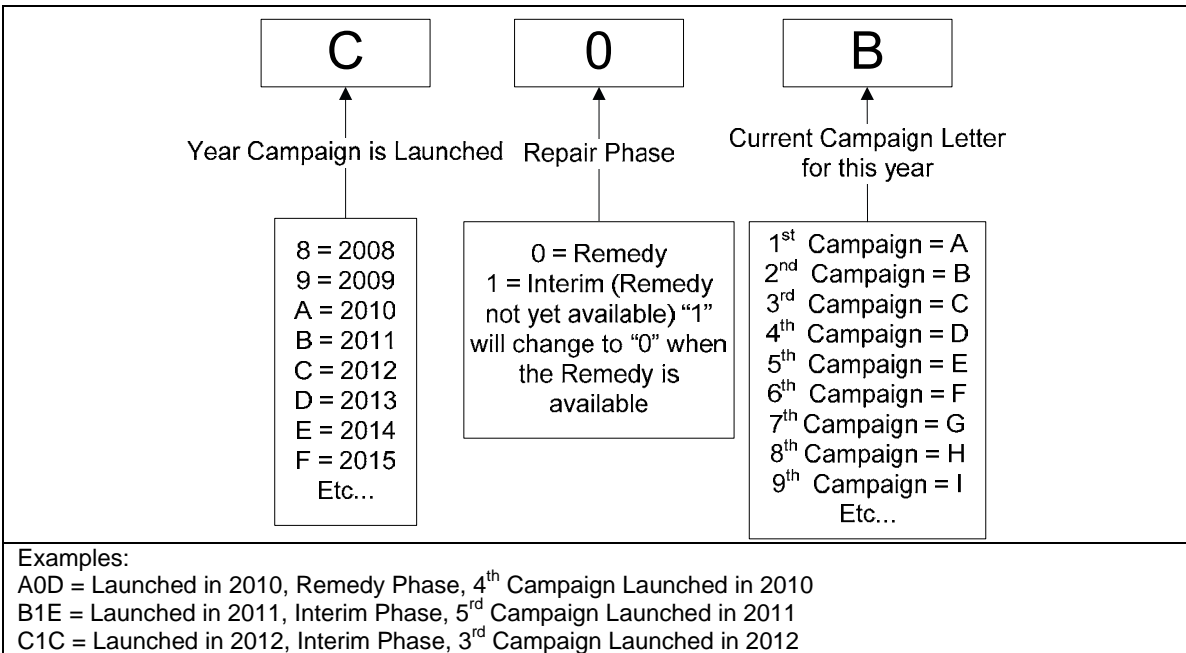
◀ VERIFY REPAIR QUALITY ▶

- Confirm all SRS precautions are followed when servicing the SRS system
- Only replace the spiral cable after verifying that replacement is required
- Confirm the new spiral cable is centered correctly during installation

If you have any questions regarding this recall, please contact your regional representative

VI. APPENDIX

A. CAMPAIGN DESIGNATION DECODER



B. RECALL PARTS DISPOSAL

As required by Federal Regulations, please make sure all recalled parts (original parts) removed from the vehicle are disposed of in a manner in which they will not be reused, ***unless requested for parts recovery return.***